

CHS Expands Dental Services

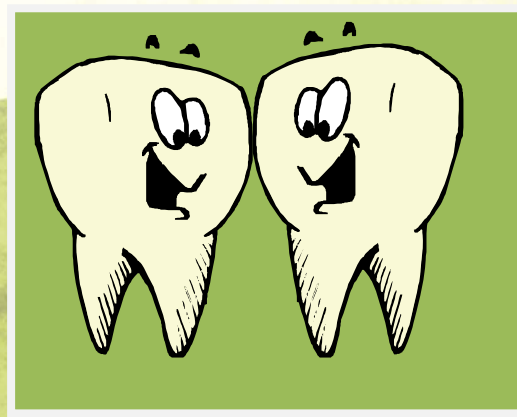
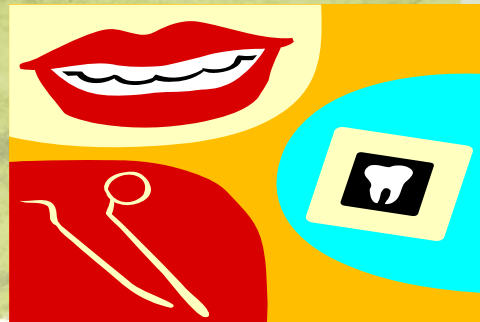
Covered Dental Services

- Oral Evaluations – 2 times per year
 - (usually once every 6 months)
- Radiographs
- Dental Cleanings – 2 times per year
 - (usually once every 6 months)
- Fluoride Treatment
- Sealants
- Restorations (Fillings)
 - Amalgam (silver) restorations
- Composite (Fillings)
 - (white-plastic) resin restorations
- Endodontic (Root Canals)
- Oral Surgery
- Orthodontic Services (Braces)

NOTE: FLHWC Dental Program will handle as many dental services as possible; however, if the dental provider(s) feel that it is necessary to refer the member to the private sector for treatment, a referral will be submitted to CHS for review and approval.

Non-Covered Services

- Crowns
- Bridges
- Partials
- Dentures
- Implants



For more Information Contact:
Tina Villalpando – CHS Specialist
Ashley Dickey – CHS Clerk
Tanya Reppert - CHS A/P Clerk

Ponca Tribe of Nebraska
Contract Health Services
1800 Syracuse Ave.
Norfolk, NE 68701

Phone #: 402-371-8834
Phone #: 800-405-0365
Fax # : 402-371-0176